

emClock Control Panel Software – Secure, Powerful and Easy to Use

Overview

The emClock emergency messaging system delivers synchronized network time and emergency messages throughout your building or across your campus. The system is configured and operated with the emClock Control Panel Software.

Emergency Messaging Features

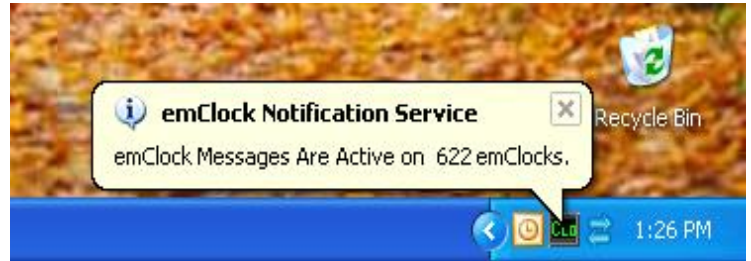
- Simple to use interface reduces confusion and errors
- Saved Emergency Messages for quick response
- Support for long messages (up to 200 characters long)
- Optional Tone Signal for added emphasis to any message
- Selection of message color (red, green or yellow)
- Ability to send messages to any combination of individual emClocks and to any number of emClock groups
- emClock Groups allows easy messaging to buildings, specific floors, departments or all outdoor units, etc.

Scheduled Messaging Features

- Configurable low priority Scheduled Messages to support the operation of the user's facility (event notices etc.)
- Optional Time Presentation at the end of any message
- Special Flashing Time message that can be used to emphasize the final minutes of an intermission or a class period transition
- Ability to schedule a "Sleep Mode" that removes the time presentation during off-hours for additional energy savings. Sleep Mode is interrupted by any Emergency Message.

Remote Interfaces Supported

- Android Mobile App for mobile campus-wide messaging
- SMS Messaging Services: **e2Campus**, **Amerialert**, more
- NWS, ADT C-CURE9000, ADT Clear Warning, Simplex 4100u, UTC Edwards Fireworks, RSS Feeds, more
- Please contact support@emClock.com to discuss custom interfaces.



System Status and Reporting

- Automatic time-stamped logging of all system events
 - Provides Audit Trail of all messaging activity
- Automatic monthly archiving of system log files
- Automatic monthly archiving of system configuration files
- emClock Viewer for remote view of any emClock
- Integrated emClock device configuration utility for easy and secure device setup
- emClock Locate feature discovers emClocks to configure
- emClock verification feature sends the unique emClock descriptor to each emClock for installation support
- Pop-up system tray icon that presents messaging activity and warnings of any emClock connectivity issues
- Internal battery on each emClock maintains time and active messages for up to a year when powered down

Time Presentation Features:

- Three time formats are supported on all emClocks
 - 12 hour with AM/PM [2:30 PM]
 - 12 hour without AM/PM [2:30]
 - 24 hour [14:30]

System Requirements

- Windows XP, Windows 7, Windows 8, Windows 10
- 2+ GB RAM
- 500 MB disk space

emClock®